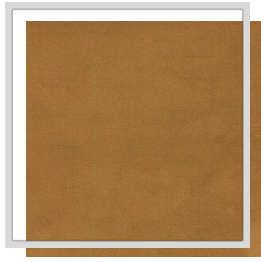
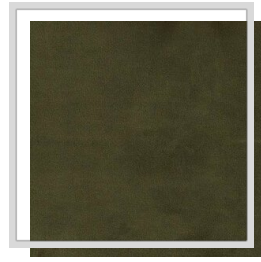


# MARVEL

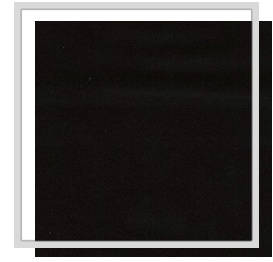
|                                   |   |
|-----------------------------------|---|
| <b>Design naam</b>                | MARVEL  |
| <b>Aantal kleuren</b>             | 36  |
| <b>Rapporthoogte</b>              | plain   |
| <b>Breedte</b>                    | 3 m   118.1 inch  |
| <b>Gewicht</b>                    | 310 g/m <sup>2</sup>   9.1 oz/yd <sup>2</sup>                                       |
| <b>Samenstelling</b>              | 100% PES  |
| <b>Krimp</b>                      | 2 %   |
| <b>Toepassingen</b>               |    |
| <b>Wasinstructies</b>             |  |
| <b>Martindale</b>                 | 40.000  |
| <b>Kleurvastheid t.o.v. licht</b> | 4   |
| <b>Certificaten</b>               |  |
| <b>Land van oorsprong</b>         | China (RP)  |



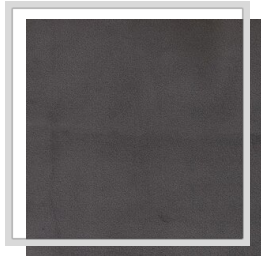
A3/honey



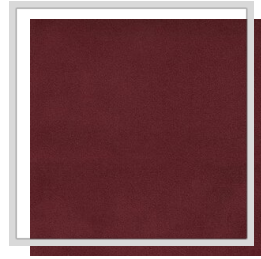
B4/cedargreen



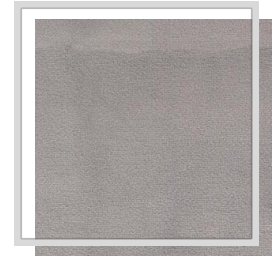
C/raven



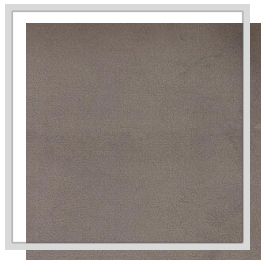
C5/charcoal



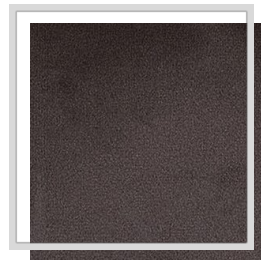
D4/cabernet



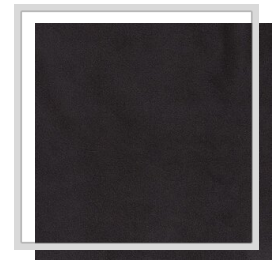
E11/dove



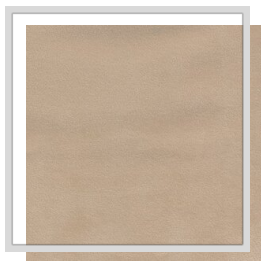
E3/ash



E6/pewter



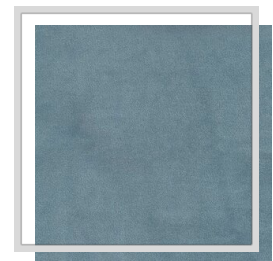
E8/magnet



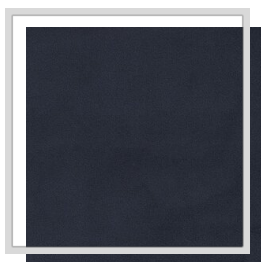
F10/semolia



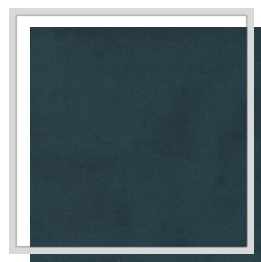
F6/nomad



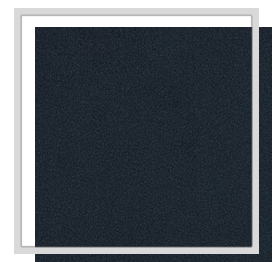
H14/citadel



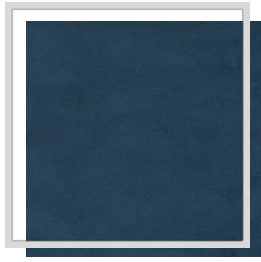
I1/denim



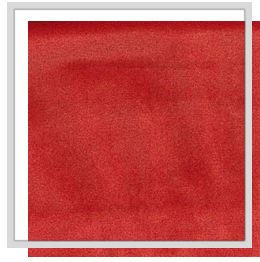
I11/mallart



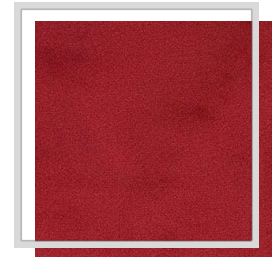
I13/bluewingteal



I3/limoges



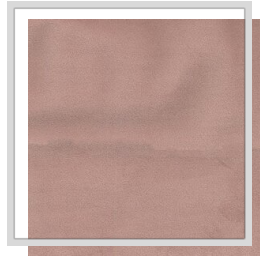
K/tomato



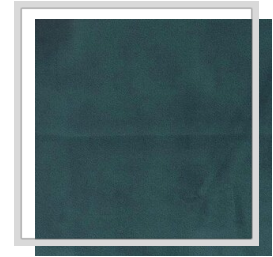
K3/chili



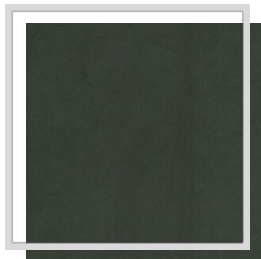
L/white



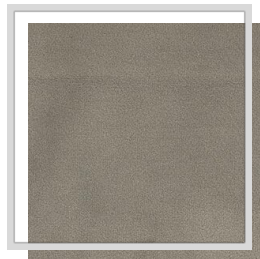
M9/adoberose



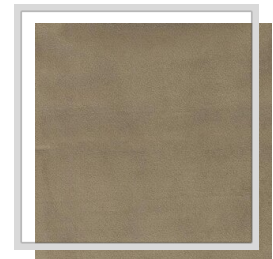
N1/jasper



N3/jungle



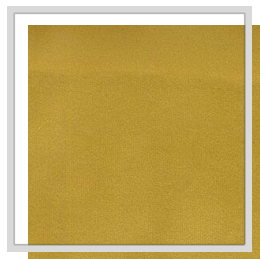
O12/stone



O13/khaki



O3/citronelle



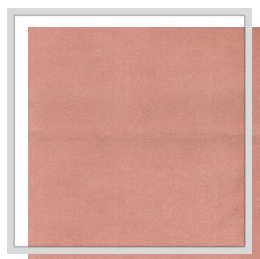
O4/celery



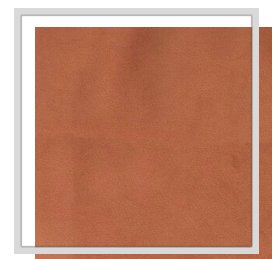
P1/turtledove



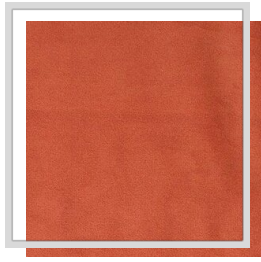
P4/angora



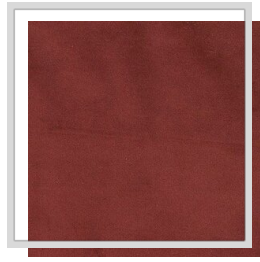
R15/cameo



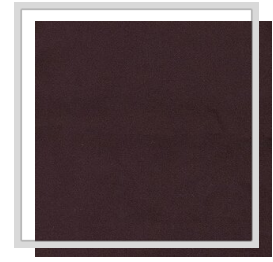
S/rust



S2/picante



S5/mahogany



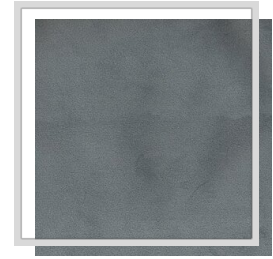
U11/eggplant



V10/driftwood



V3/fungi



Y7/trooper