

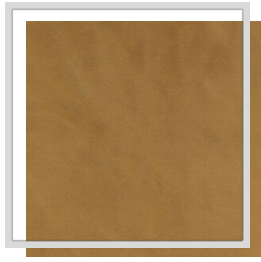
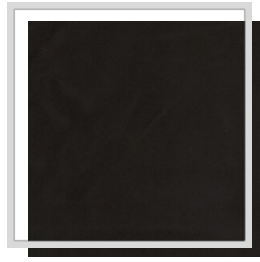


ARIEL

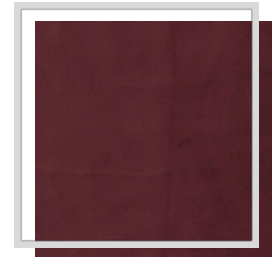
| | |
|-----------------------------------|---|
| Design naam | ARIEL |
| Aantal kleuren | 30 |
| Rapporthoogte | plain |
| Breedte | 3 m 118.1 inch |
| Gewicht | 457 g/m ² 13.5 oz/yd ² |
| Samenstelling | 100% PES |
| Krimp | 1 % |
| Toepassingen |  |
| Wasinstructies |  |
| Kleurvastheid t.o.v. licht | 4 |
| Certificaten |  |
| Land van oorsprong | China (RP) |



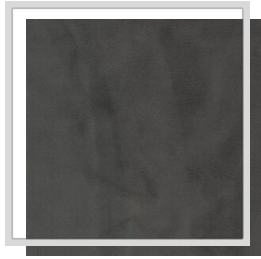
A7/mustard



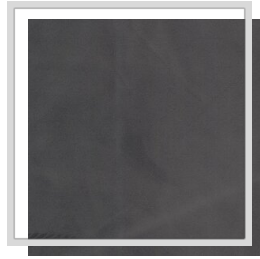
C3/anthracite



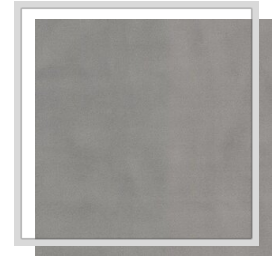
D2/rumba



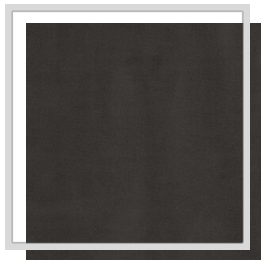
E15/sedona



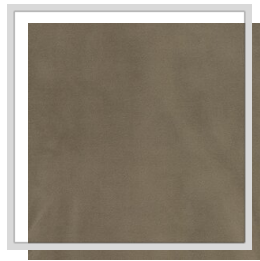
E2/sleet



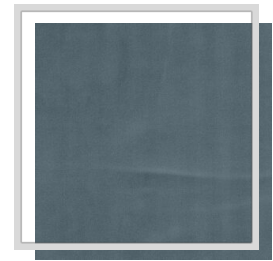
E3/ash



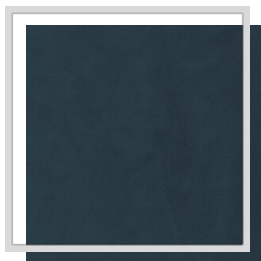
E7/eiffel



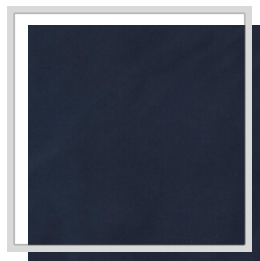
F12/crockery



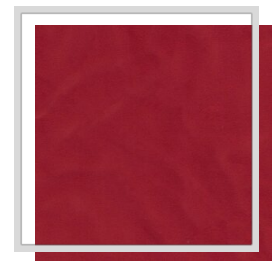
H6/niagara



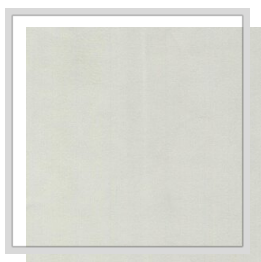
I11/mallart



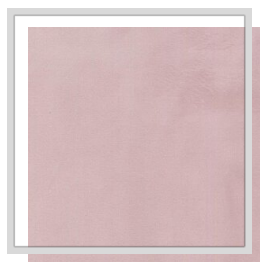
I13/bluewingteal



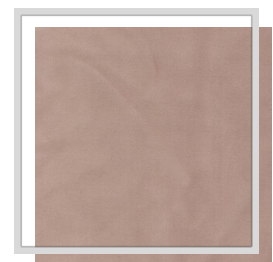
K2/salsa



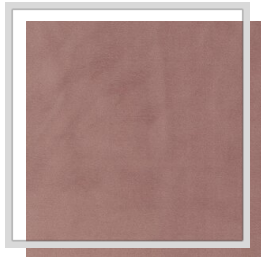
L1/snow



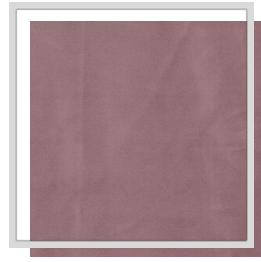
M/ballerina



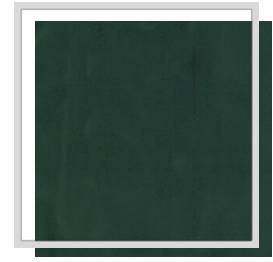
M14/rosmoke



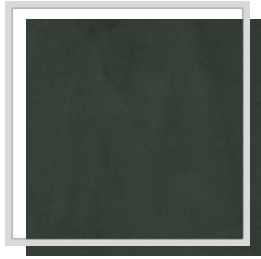
M3/blush



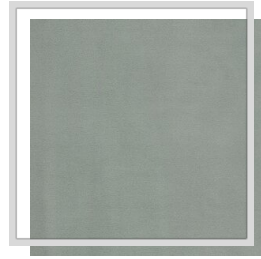
M4/foxglove



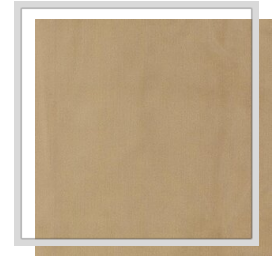
N1/jasper



N3/jungle



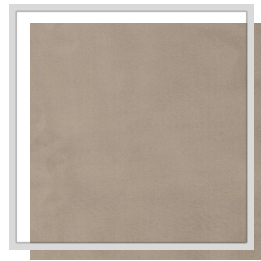
O10/chinois



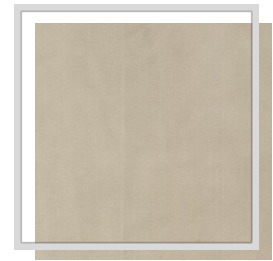
O13/khaki



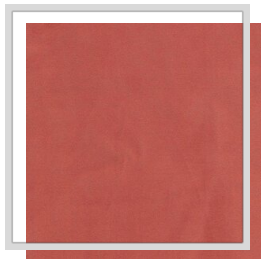
P1/turtledove



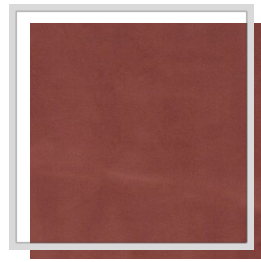
P10/rainyday



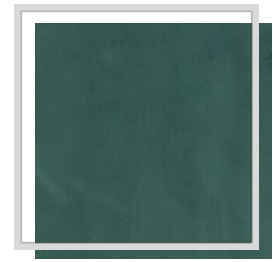
P5/fog



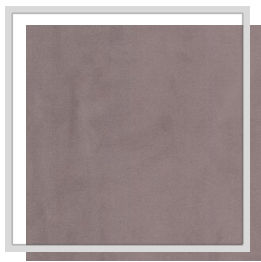
R2/coral



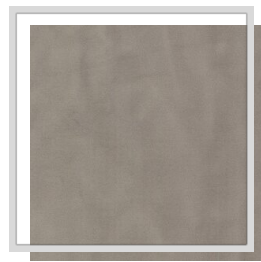
S2/picante



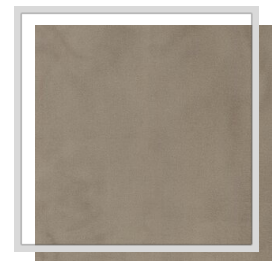
T6/ocean



U12/zinc



V/string



V10/driftwood