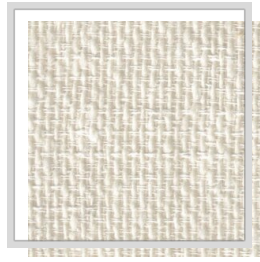


# TAVIRA

|   |   |
|---|---|
| <b>Nom du design</b>                      | TAVIRA  |
| <b>Nombre de couleurs</b>                 | 8   |
| <b>Hauteur du rapport</b>                 | plain   |
| <b>Largeur</b>                            | 3 m   118.1 inch  |
| <b>Lester</b>                             | 244 g/m <sup>2</sup>   7.2 oz/yd <sup>2</sup>                                       |
| <b>Composition</b>                        | 30% WORCY, 22% CO, 25% PES, 23% PANRCY  |
| <b>Réduction</b>                          | 3 %   |
| <b>Applications</b>                       |    |
| <b>Instructions de lavage</b>             |  |
| <b>Solidité des couleurs à la lumière</b> | 5   |
| <b>Certificats</b>                        |  |
| <b>Pays d'origine</b>                     | Turquie   |



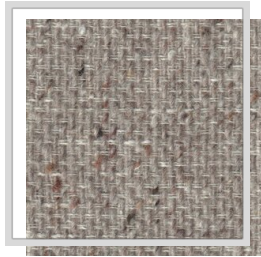
F/cement



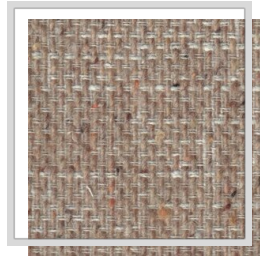
F0/whisper



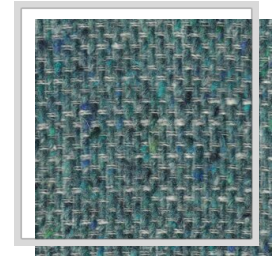
F1/pebble



F12/crockery



F7/natural



I11/mallart



O1/reseda



O6/aloe