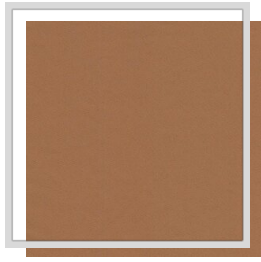
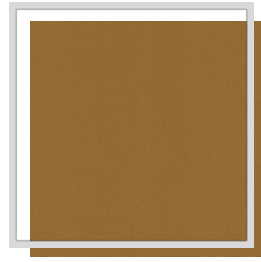


MIKADO

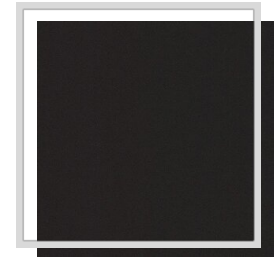
| | |
|---|---|
| Nom du design | MIKADO |
| Nombre de couleurs | 40 |
| Hauteur du rapport | plain |
| Largeur | 3.2 m 126 inch |
| Lester | 250 g/m ² 7.4 oz/yd ² |
| Composition | 100% IFRPES |
| Réduction | 1 % |
| Applications |  |
| Instructions de lavage |  |
| Solidité des couleurs à la lumière | 4 |
| Certificats de résistance au feu | <u>M1</u> |
| Caractéristiques acoustiques | <u>.8</u> |
| Certificats |  |
| Pays d'origine | Chine (RP) |



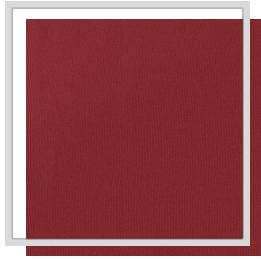
A5/applecinnamon



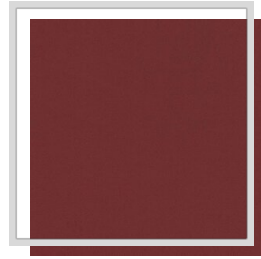
A7/mustard



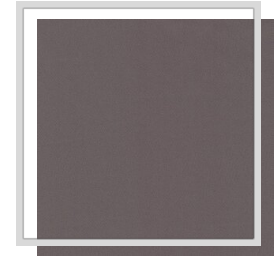
C/raven



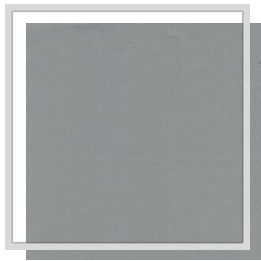
D1/dahlia



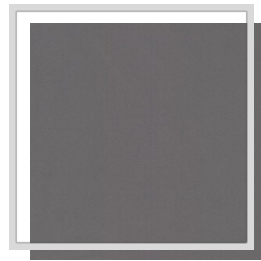
D4/cabernet



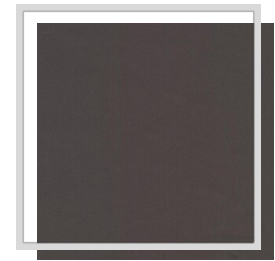
E13/storm



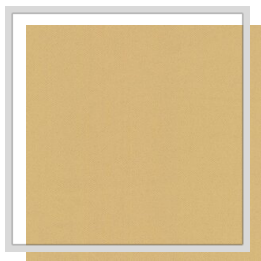
E14/quarry



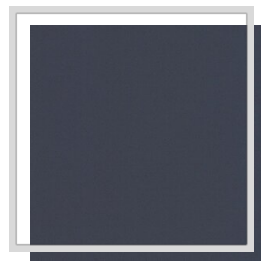
E2/sleet



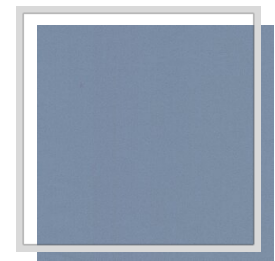
E7/eiffel



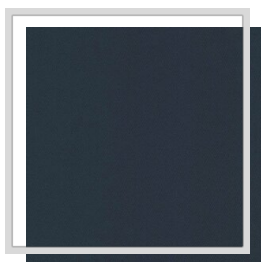
G13/straw



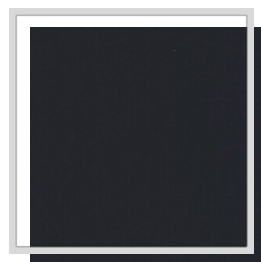
H12/chinablue



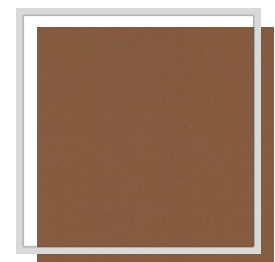
H16/foreverblue



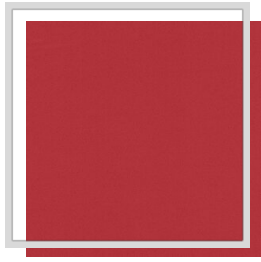
I1/denim



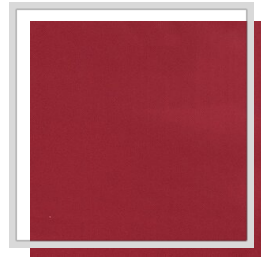
I13/bluewingteal



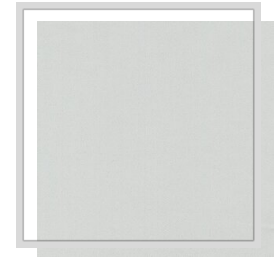
J4/thrush



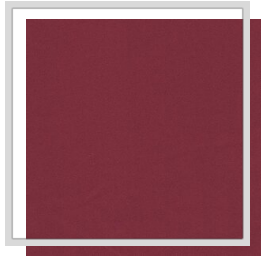
K1/scarlet



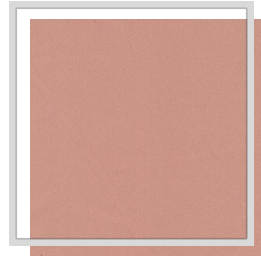
K3/chili



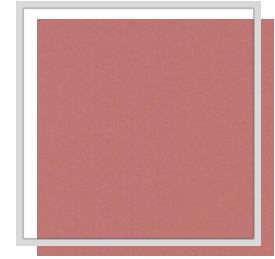
L/white



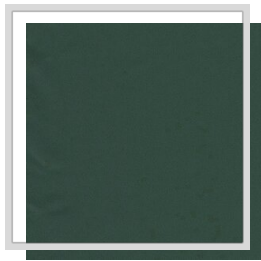
M10/anemone



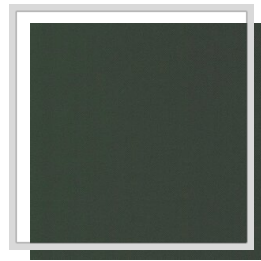
M19/rosecloud



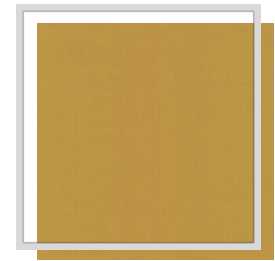
M3/blush



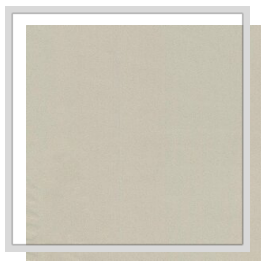
N/galapagos



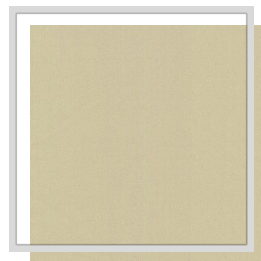
N3/jungle



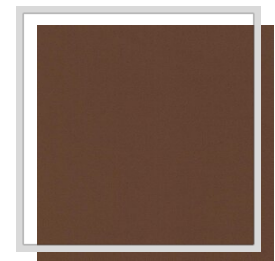
O4/celery



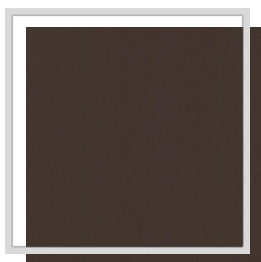
P1/turtledove



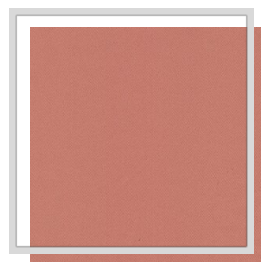
P9/biscotti



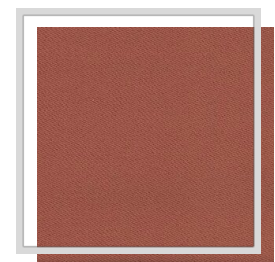
Q2/mustang



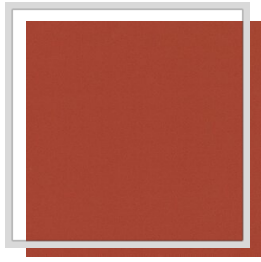
Q4/mulch



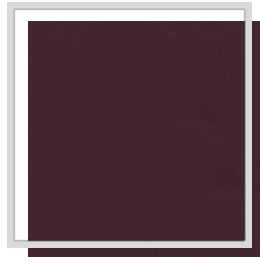
R6/tawnyorange



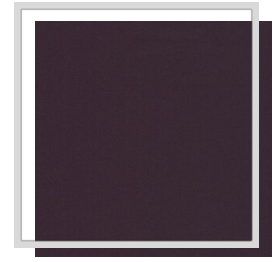
R7/gingerspice



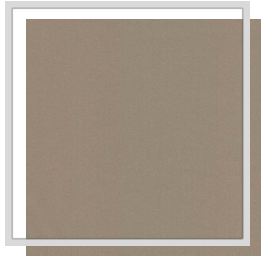
S/rust



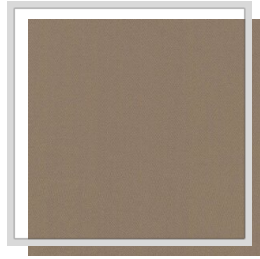
U11/eggplant



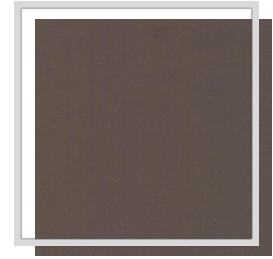
U6/mystical



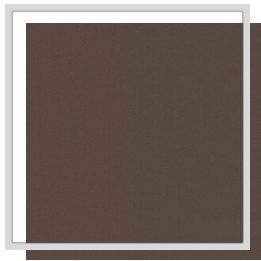
V/string



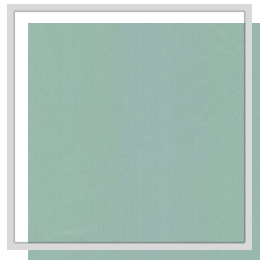
V10/driftwood



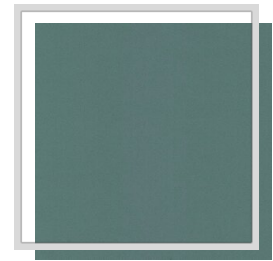
V6/walnut



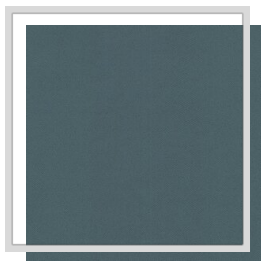
V7/falcon



Y3/jade



Y8/mineral



Y9/trellis