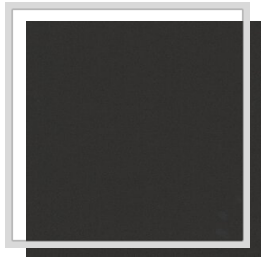
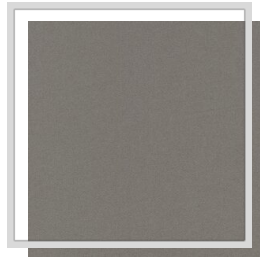


# CHARLIE

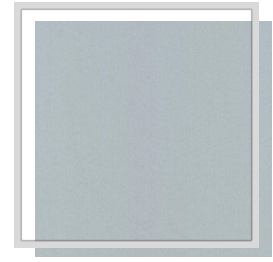
<b>Nom du design</b>	CHARLIE
<b>Nombre de couleurs</b>	18
<b>Hauteur du rapport</b>	plain
<b>Largeur</b>	3.2 m   126 inch
<b>Lester</b>	236 g/m <sup>2</sup>   7 oz/yd <sup>2</sup>
<b>Composition</b>	100% PES
<b>Réduction</b>	2 %
<b>Applications</b>	
<b>Instructions de lavage</b>	
<b>Solidité des couleurs à la lumière</b>	4
<b>Certificats</b>	
<b>Pays d'origine</b>	Taiwan



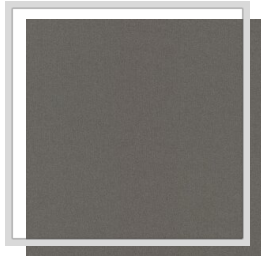
C/raven



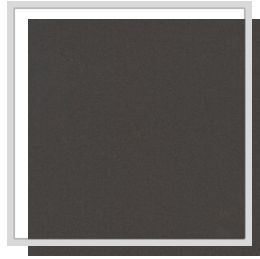
E0/alloy



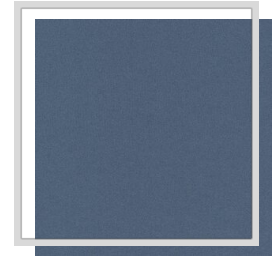
E11/dove



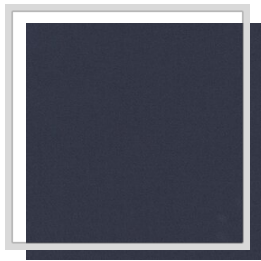
E15/sedona



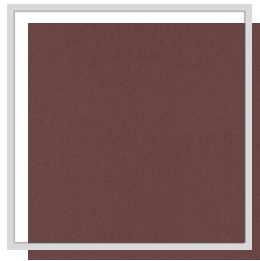
E16/tornado



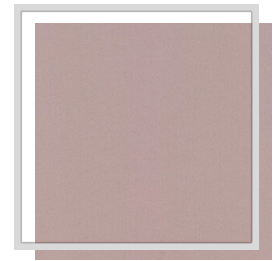
H15/riviera



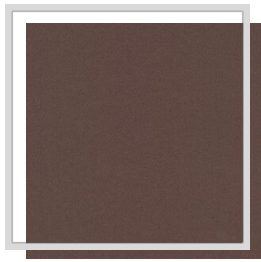
I4/patriot



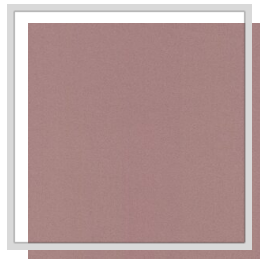
M0/nocturne



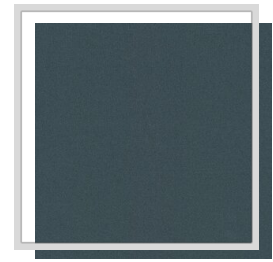
M1/potpouri



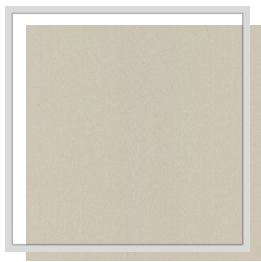
M13/peppercorn



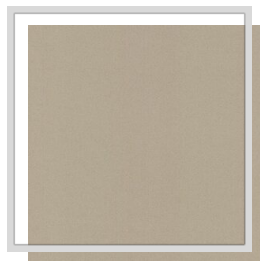
M4/foxglove



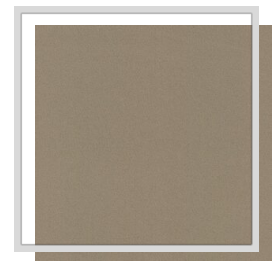
N1/jasper



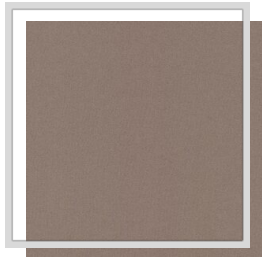
P/pristine



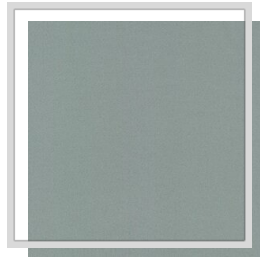
P5/fog



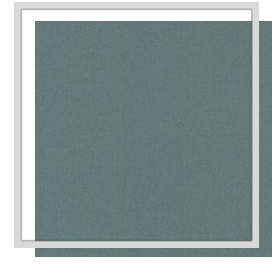
V/string



V2/satelite



Y11/metal



Y8/mineral