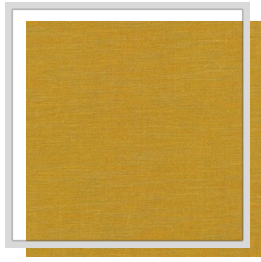
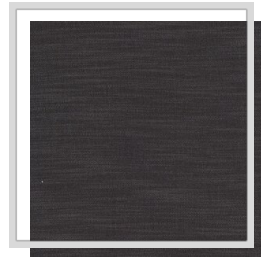


# PORTOS

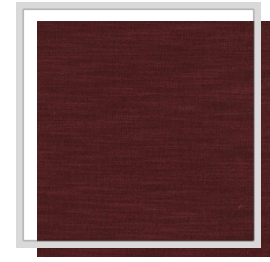
<b>Nom du design</b>	PORTOS
<b>Nombre de couleurs</b>	19
<b>Hauteur du rapport</b>	plain
<b>Largeur</b>	3 m   118.1 inch
<b>Lester</b>	400 g/m <sup>2</sup>   11.8 oz/yd <sup>2</sup>
<b>Composition</b>	100% PES
<b>Réduction</b>	1 %
<b>Applications</b>	
<b>Instructions de lavage</b>	
<b>Martindale</b>	20,000
<b>Pilling</b>	4
<b>Solidité des couleurs à la lumière</b>	4
<b>Certificats</b>	
<b>Pays d'origine</b>	Chine (RP)



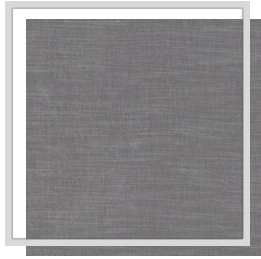
A1/ochre



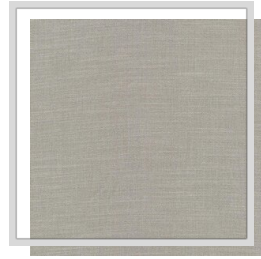
C/raven



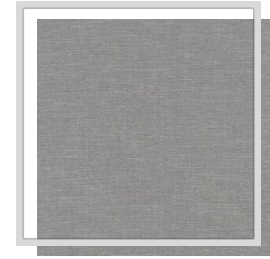
D4/cabernet



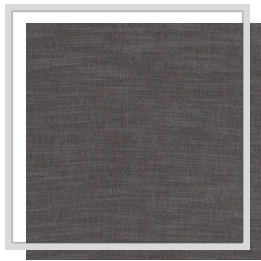
E0/alloy



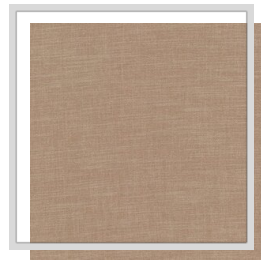
E11/dove



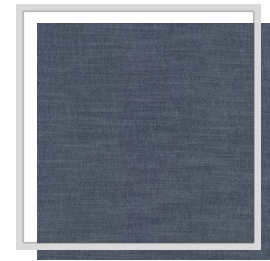
E14/quarry



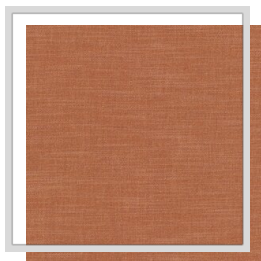
E7/eiffel



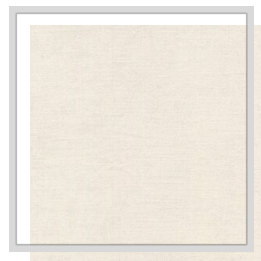
F11/sesame



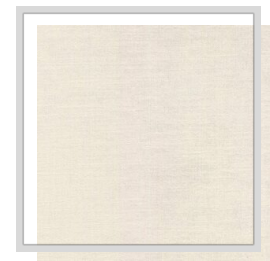
I11/mallart



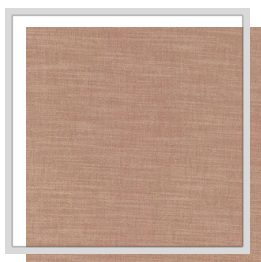
J2/sudan



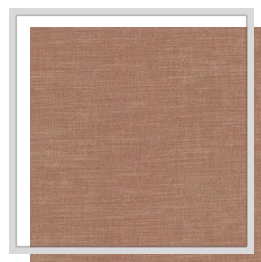
L/white



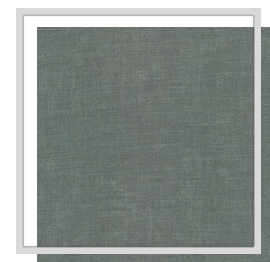
L1/snow



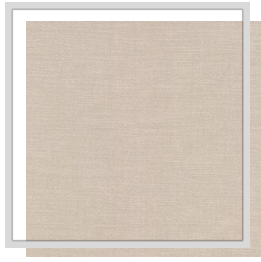
M19/rosecloud



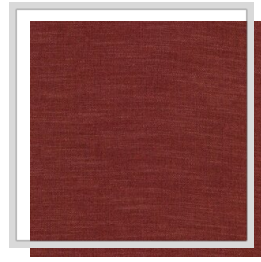
M9/adoberose



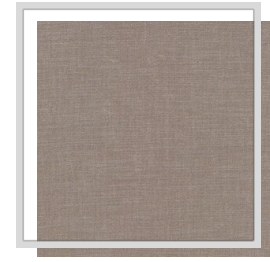
O10/chinois



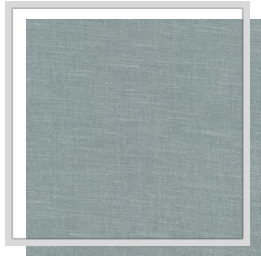
P1/turtledove



S2/picante



V/string



Y4/lichen