

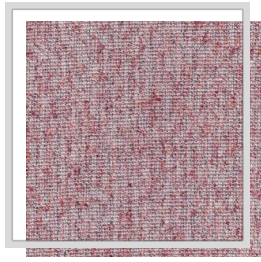
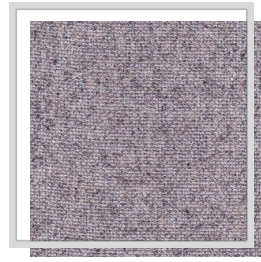


SOUL

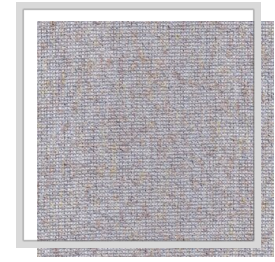
| | |
|--------------------------------|---|
| Design name | SOUL |
| Number of colours | 9 |
| Report height | plain |
| Width | 3.2 m 126 inch |
| Weight | 178 g/m ² 5.2 oz/yd ² |
| Composition | 50% PAN, 10% WO, 40% PES |
| Shrink | 2 % |
| Applications |  |
| Washing instructions |  |
| Color fastness to light | 4-5 |
| Certificates |  |
| Country of origin | Turkey |



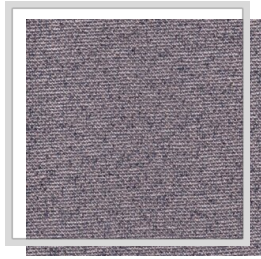
D2/rumba



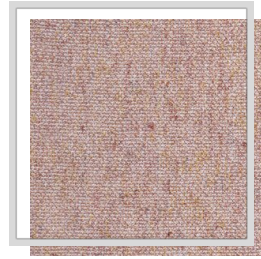
E13/storm



E14/quarry



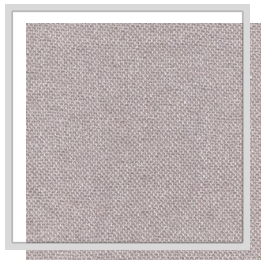
E15/sedona



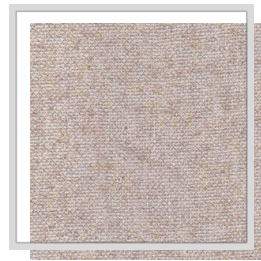
F7/natural



P1/turtledove



P10/rainyday



P5/fog



V/string