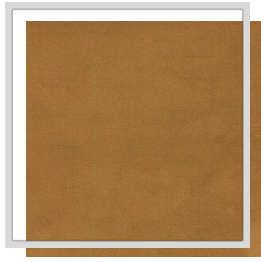
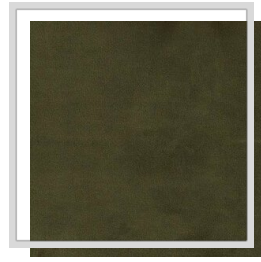


MARVEL

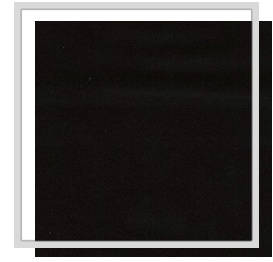
| | |
|--------------------------------|---|
| Design name | MARVEL |
| Number of colours | 36 |
| Report height | plain |
| Width | 3 m 118.1 inch |
| Weight | 310 g/m ² 9.1 oz/yd ² |
| Composition | 100% PES |
| Shrink | 2 % |
| Applications |  |
| Washing instructions |  |
| Martindale | 40.000 |
| Color fastness to light | 4 |
| Certificates |  |
| Country of origin | China (People's Republic) |



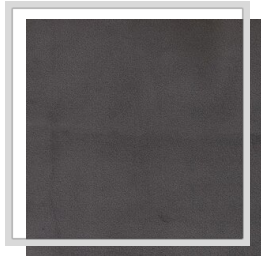
A3/honey



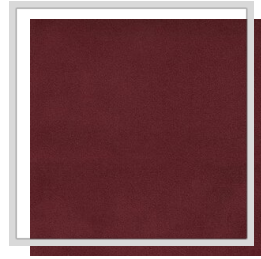
B4/cedargreen



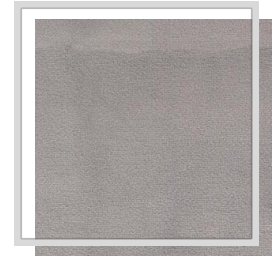
C/raven



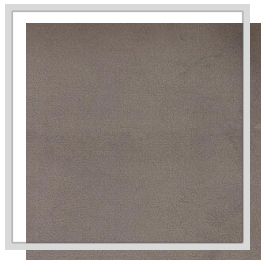
C5/charcoal



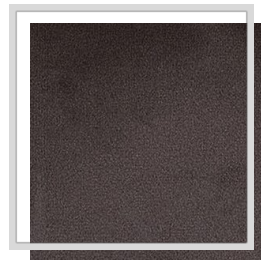
D4/cabernet



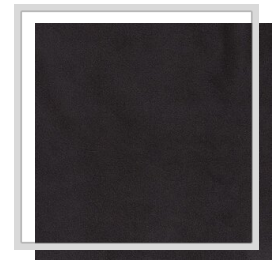
E11/dove



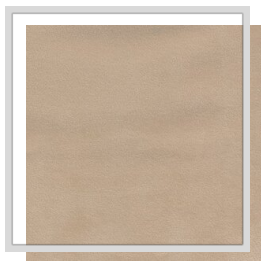
E3/ash



E6/pewter



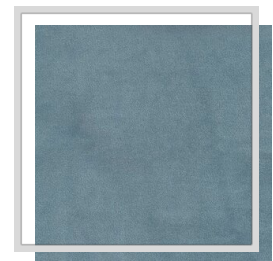
E8/magnet



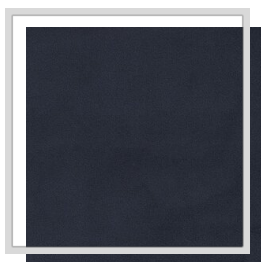
F10/semolia



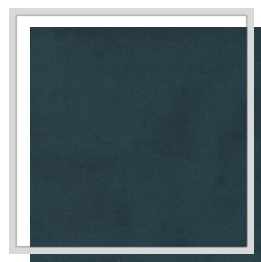
F6/nomad



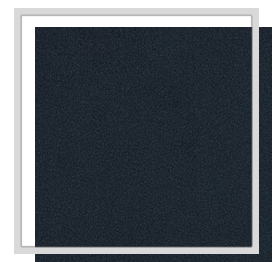
H14/citadel



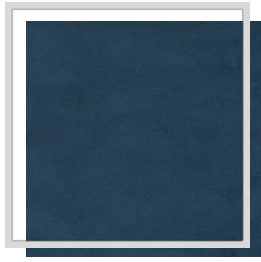
I1/denim



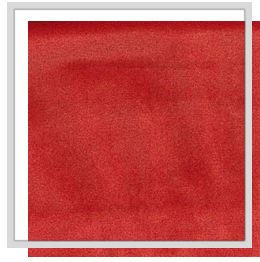
I11/mallart



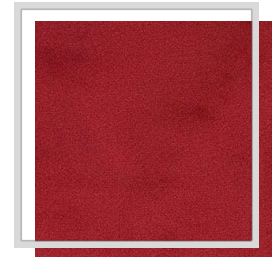
I13/bluewingteal



I3/limoges



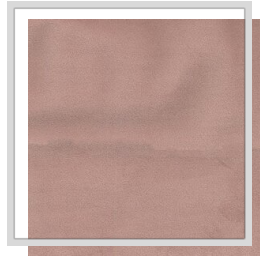
K/tomato



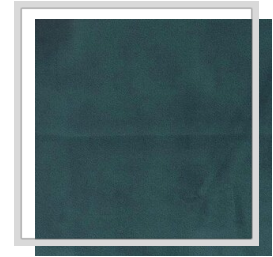
K3/chili



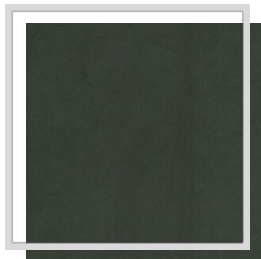
L/white



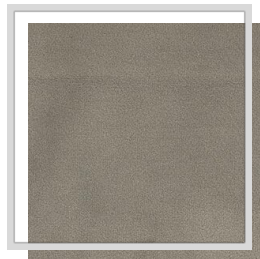
M9/adoberose



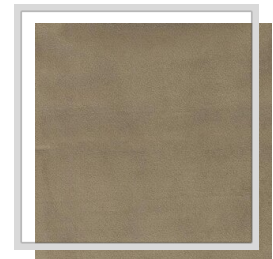
N1/jasper



N3/jungle



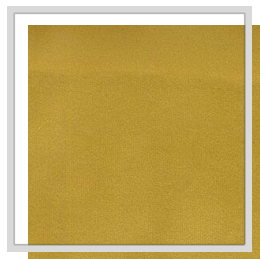
O12/stone



O13/khaki



O3/citronelle



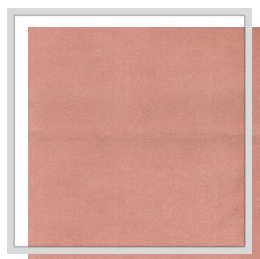
O4/celery



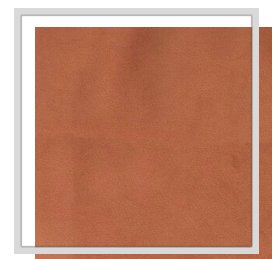
P1/turtledove



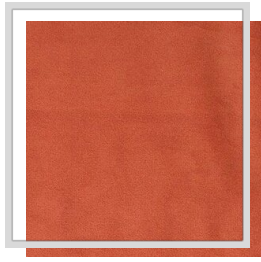
P4/angora



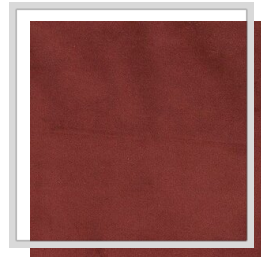
R15/cameo



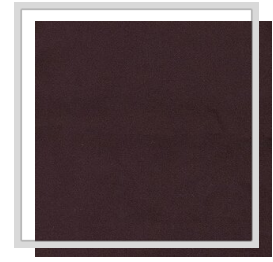
S/rust



S2/picante



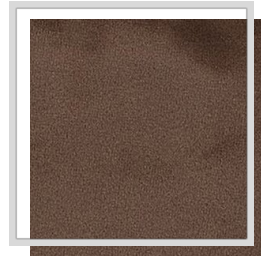
S5/mahogany



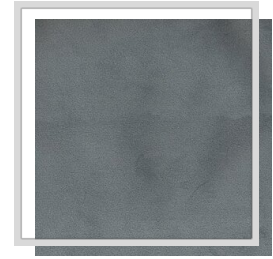
U11/eggplant



V10/driftwood



V3/fungi



Y7/trooper